

MULTI-CLOUD DATA ENGINEER WITH GENERATIVE AI SPECIALIZATION

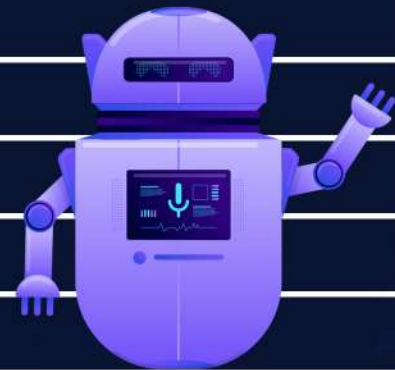
This program is the first-of-its-kind in the Industry covering technical architecture, system design and deepdive into various cloud data engineering and analytics services/ systems on GCP, AWS, Azure, Snowflake, Databricks

COURSE DURATION: 120 HRS OF THEORY & PRACTICALS, UPTO 20 HRS OF PROJECT WORK (TOTAL 140 HRS)

We provide a course completion certificate and offer internship assistance (for students) and placement assistance (for working professionals and final yr students/ recent passouts).

WHAT WE TEACH:

MODULE NAME	COURSE TOPIC
CLOUD NATIVE FUNDAMENTALS	COMPUTE- AWS, GCP
CLOUD NATIVE FUNDAMENTALS	STORAGE- AWS, GCP
CLOUD NATIVE FUNDAMENTALS	DATABASES- AWS, GCP
CLOUD NATIVE FUNDAMENTALS	DATA SECURITY- AWS, GCP
DATA ENGINEERING FUNDAMENTALS	DATA ENGINEERING
DATA ENGINEERING FUNDAMENTALS	DATA STORAGE
DATA ENGINEERING FUNDAMENTALS	DATA PIPELINES
DATA ENGINEERING FUNDAMENTALS	DATA WAREHOUSING & ETL
DATA ENGINEERING FUNDAMENTALS	ANALYTICS
DATA ENGINEERING FUNDAMENTALS	DATA MESH & DATA FABRIC
DATA ENGINEERING FUNDAMENTALS	DATA OPS
DATA ENGINEERING FUNDAMENTALS	DOUBT CLEARING, INTERVIEW & CERTIFICATION PREP
DATA ENGINEERING -GOOGLE CLOUD PLATFORM	GOOGLE BIGQUERY DATA WAREHOUSE
DATA ENGINEERING -GOOGLE CLOUD PLATFORM	DEMO & SYSTEM DESIGN- GOOGLE BIGQUERY
DATA ENGINEERING -GOOGLE CLOUD PLATFORM	GOOGLE DATAFLOW (SPARK, FLINK)
DATA ENGINEERING -GOOGLE CLOUD PLATFORM	DEMO & SYSTEM DESIGN- DATA PIPELINE WITH GOOGLE DATAFLOW
DATA ENGINEERING -GOOGLE CLOUD PLATFORM	GOOGLE DATAPROC
DATA ENGINEERING -GOOGLE CLOUD PLATFORM	DEMO- GOOGLE DATAPROC



MODULE NAME	COURSE TOPIC
DATA ENGINEERING -GOOGLE CLOUD PLATFORM	GOOGLE CLOUD COMPOSER (AIRFLOW) FOR DATA PIPELINES
DATA ENGINEERING -GOOGLE CLOUD PLATFORM	DOUBT CLEARING, INTERVIEW & CERTIFICATION PREP
DATA ENGINEERING -GOOGLE CLOUD PLATFORM	DEMO - SETTING UP DATA PIPELINE WITH DATAFLOW
DATA ENGINEERING -GOOGLE CLOUD PLATFORM	DOUBT CLEARING, INTERVIEW & CERTIFICATION PREP
DATA ENGINEERING- SNOWFLAKE	SNOWFLAKE DATAWAREHOUSE
DATA ENGINEERING- SNOWFLAKE	DEPDIVE- SNOWFLAKE SQL
DATA ENGINEERING- SNOWFLAKE	DEEPDIVE- DATA LOADING & ETL/ ELT
DATA ENGINEERING- SNOWFLAKE	DEEPDIVE- MICROPARTITIONS & CLUSTERING
DATA ENGINEERING- SNOWFLAKE	DEEPDIVE-SNOWPIPE,TIME TRAVEL,FAIL-SAFE & ZERO-COPY CLONING
DATA ENGINEERING- SNOWFLAKE	DEEPDIVE- SNOWFLAKE SECURITY & ACCESS CONTROL MODEL
DATA ENGINEERING- SNOWFLAKE	DEEPDIVE- DATA SHARING
DATA ENGINEERING- SNOWFLAKE	DEEPDIVE- STORED PROCEDURES & UDFS
DATA ENGINEERING- SNOWFLAKE	DEEPDIVE- TASKS, TRANSACTIONS & STREAMS
DATA ENGINEERING- SNOWFLAKE	DEEPDIVE- MATERIALIZED VIEWS & DATA MASKING
DATA ENGINEERING- SNOWFLAKE	DEEPDIVE- DATA MARKETPLACE & DATA CLEANROOM
DATA ENGINEERING- SNOWFLAKE	DEMO- INVENTORY REPORTING WITH SNOWFLAKE DWH
DATA ENGINEERING- SNOWFLAKE	SNOWPARK
DATA ENGINEERING- SNOWFLAKE	DEMO- SNOWPARK WITH PYTHON, SNOWSPARK
DATA ENGINEERING- SNOWFLAKE	DOUBT CLEARING, INTERVIEW & CERTIFICATION PREP
DATA ENGINEERING- DATABRICKS	APACHE SPARK
DATA ENGINEERING- DATABRICKS	DELTA LAKE
DATA ENGINEERING- DATABRICKS	DATABRICKS LAKEHOUSE PLATFORM
DATA ENGINEERING- DATABRICKS	DEMO- CUSTOMER DATA PLATFORM ON LAKEHOUSE
DATA ENGINEERING- DATABRICKS	DOUBT CLEARING, INTERVIEW & CERTIFICATION PREP
GENERATIVE AI & LLMS	BASICS, TOOLS, USAGE IN DATA ENGG PROBLEMS/ TASKS



WHO SHOULD ATTEND:

- In our batches for students
- Engineering (CS, IT, others) - undergrad/masters & MCA (2nd yr till final yr) students
- Recent passouts / freshers (0-1 yrs exp) looking for jobs in data engineering, cloud in general.

2. IN OUR BATCHES FOR EXPERIENCED PROFESSIONALS

- Software professionals with 1 to 6 yrs experience, working in data engineering, analytics, software backend development, frontend development, application maintenance & support, testing, mainframes.
- Software professionals looking to change skillsets from areas like testing to cloud or data engineering
- Project Managers, sales, pre-sales, delivery managers, engineering managers from IT/ software product industry
- Other experienced professionals looking to enter software engineering/ build career in software industry

PRE-REQUISITES:

- Basic python programming knowledge is good-to-have.
- Basic SQL hands-on knowledge is good-to-have
- Basic cloud knowledge is good-to-have



NEW STUDENT BATCHES - 1 PER WEEK PER PROGRAM

NEW EXPERIENCED PROFESSIONAL BATCHES- 1 PER WEEK PER PROGRAM

REGISTER FOR OUR WEEKLY SESSIONS:

1. Career options on multi-cloud engineering with generative AI specialization
Register at <https://lnkd.in/dQWSzziV>
2. Register for Free classes- Multi-cloud data engineer with generative AI
Register at <https://forms.gle/f25cnztWpUGvwwk568>